

# *Master Drawings New York*



---

Saturday January 23  
– Saturday January 30

*Preview at all galleries*

Friday January 22, 4–8 pm

# 2016

- 
- 1 Pia Gallo**  
12 East 86th Street, Suite 1140
  - 2 Monroe Warshaw**  
Exhibiting at:  
5 East 82nd Street
  - 3 Jill Newhouse Gallery**  
4 East 81st Street
  - 4 Martyn Gregory**  
Exhibiting at: Leigh Morse Fine Arts  
22 East 80th Street, 5th Floor
  - 5 Nissman, Abromson Ltd**  
Exhibiting at: Robert Simon Fine Art  
22 East 80th Street, 4th Floor
  - 6 Mattia & Maria Novella Romano**  
Exhibiting at: Arader Galleries  
1016 Madison Avenue, 4th Floor
  - 7 Guy Peppiatt Fine Art Ltd**  
Exhibiting at: Arader Galleries  
1016 Madison Avenue, 1st Floor
  - 8 James Mackinnon**  
Exhibiting at: Arader Galleries  
1016 Madison Avenue, 3rd Floor
  - 9 Margot Gordon Fine Arts**  
Exhibiting at: Shepherd W & K Galleries  
58 East 79th Street
  - 10 Crispian Riley-Smith Fine Arts**  
Exhibiting at: Shepherd W & K Galleries  
58 East 79th Street
  - 11 W&K – Wienerroither & Kohlbacher**  
Exhibiting at: Shepherd W & K Galleries  
58 East 79th Street
  - 12 Lowell Libson Ltd**  
Exhibiting at: Stellan Holm Gallery  
1018 Madison Avenue
  - 13 Pandora Old Masters Inc.**  
Exhibiting at: The Metropolitan Room  
The Mark Hotel, 25 East 77th Street
  - 14 Van Doren Waxter**  
23 East 73rd Street
  - 15 Mary-Anne Martin | Fine Art**  
23 East 73rd Street
  - 16 Marianne Elrick-Manley Fine Art Inc**  
Exhibiting at: Meredith Ward Fine Art  
44 East 74th Street, Suite G
  - 17 Laura Pecheur**  
Exhibiting at: Gallery Stephen Schlesinger  
24 East 73rd Street, 2nd Floor
  - 18 Mia N. Weiner**  
Exhibiting at: L'Antiquaire &  
The Connoisseur  
36 East 73rd Street
  - 19 Richard A. Berman Fine Art**  
Exhibiting at: J P Morgan Chase Bank  
The Vault, 35 East 72nd Street
  - 20 Kraushaar Galleries**  
15 East 71st Street, #2B
  - 21 Découvert Fine Art**  
Exhibiting at: Lois Wagner Fine Arts, Inc.  
15 East 71st Street, Suite 2A
  - 22 David Tunick, Inc.**  
13 East 69th Street
  - 23 Christopher Bishop Fine Art**  
Exhibiting at: Leslie Feely Fine Art  
33 East 68th Street, 5th Floor
  - 24 Allan Stone Projects**  
Exhibiting at: Jonathan Boos  
801 Madison Avenue, 5th Floor
  - 25 Mireille Mosler Ltd**  
35 East 67th Street
  - 26 Stephen Ongpin Fine Art**  
Exhibiting at: Dickinson Roundell  
19 East 66th Street
  - 27 Leonard Hutton Galleries**  
790 Madison Avenue, Suite 506
  - 28 Didier Aaron, Inc.**  
32 East 67th Street
  - 29 Mark Murray Fine Paintings**  
159 East 63rd Street, Ground Floor
  - s Sotheby's New York**  
1334 York Avenue
  - c Christie's New York**  
20 Rockefeller Plaza

# *Master Drawings New York*

## PREVIEW AT ALL GALLERIES

Friday January 22, 4–8 pm

## GALLERIES OPEN

Saturday 23 January through  
Saturday 30 January, 2016

Sunday January 24, 2 pm–6 pm

Monday–Saturday 11 am–6 pm

## ENQUIRIES

[susan@susanpr.com](mailto:susan@susanpr.com)



[@masterdrawingny](https://twitter.com/masterdrawingny)



[@masterdrawingsnewyork](https://www.facebook.com/masterdrawingsnewyork)



[@masterdrwgsny](https://www.instagram.com/masterdrwgsny)

# Introduction

‘I find there is a sort of contentment in knowing that a given work is from a given time, and by a given hand, and I greatly esteem this sort of knowledge.’ For the great connoisseur and collector Pierre-Jean Mariette (1699–1774) – whom we are celebrating at the Morgan Library & Museum – aesthetic pleasure was indistinguishable from connoisseurship, defined with estimable understatement by his English contemporary Jonathan Richardson (1665–1745) as the ‘knowledge of hands.’ These men of the Enlightenment were creating a new discipline – or science – in which simply admiring what was beautiful no longer sufficed. Mariette classified his drawings and prints by artist, school, date, and media – a system that remains fundamental to museums, collectors, and dealers today. In so doing, he adopted, and adapted, the taxonomies used in the natural sciences to identify and arrange archetypes. Drawings, Richardson noted, were ‘the mind itself, the quintessence of art.’

As the recently appointed sixth Director of the Morgan, I wish I could claim responsibility for organizing the Mariette show to coincide with the tenth anniversary of *Master Drawings New York*. But of course, the project was planned long in advance, as are the presentations of dealers from the United States and abroad who flock to New York for the last week in January. Mariette, who came from a dynasty of print dealers and publishers, would also have appreciated the bonhomie and cordiality of this international group of collectors and curators who congregate in New York at this time. Just as he became part of the select group of connoisseurs, collectors, and artists who met in Pierre Crozat’s residence on the rue de Richelieu to study the banker’s peerless collection of old master drawings, so do the many participants in *Drawings Week* engage in close and careful looking and animated discussion in the various galleries and beyond, at events both formal and informal, throughout the week.

Two further comments, if I may. As we have discovered from the recent flowering of publications on Mariette as a collector and scholar of drawings, the presentation and mounting of his collection

was of critical importance to him. He was manually dexterous, as well as intellectually pioneering. His fellow connoisseur, the Swedish count, Carl Gustaf Tessin (1695–1770), spoke admiringly of how his friend was able to ‘bring drawings back to life.’ Mariette’s restorations, revisions, and occasional “improvements” were inspired by his desire to present the viewer with the best initial experience of a drawing, the first impression which he termed ‘*le coup d’oeil*.’ In many ways this prefigures the collaboration between scholars, curators, and conservators of drawings. Mariette was all three, in some ways, and his approach remains fundamental to our stewardship and understanding of these works today. Ever more sophisticated technical examination allows us to probe further into the material and creative processes by which an image assumes its final form and power.

Among the guests at the banker Crozat’s table, and among those with whom Mariette would have rubbed shoulders, were artists such as Charles Coypel and Antoine Watteau. It is worth reminding ourselves that, from the Enlightenment on, the study and delectation of drawings of the past have been intimately related to the creation of modern art itself. As Mariette’s fellow connoisseur – and Watteau’s patron- the comte de Caylus noted in 1732: ‘Nothing excites the genius of a Painter, or gives him the inner fire so necessary to composition, as the examination of a fine drawing.’ Living artists are impassioned, and, in some ways, privileged ‘consumers’ of drawings of the past. At *Drawings Week*, we extend the warmest invitation to them. I know that I speak for my fellow directors of museums in the city when I say that we encourage them to avail themselves, by whatever means possible, of the graphic collections under our care.

Colin B. Bailey

DIRECTOR, THE MORGAN LIBRARY & MUSEUM,  
NEW YORK

# Didier Aaron, Inc.

32 EAST 67TH STREET  
NEW YORK, NY 10065

T +1 212 988 5248  
info@didieraaron.com

www.didieraaron.com

*Master Drawings 1600–1875*

François Hippolyte Lalaisse  
(1810–1884)

*Two male écorché figures*

Pen and brown ink

15 $\frac{7}{8}$  × 10 $\frac{1}{8}$  in · 402 × 259 mm



## Richard A. Berman Fine Art

*Master Drawings 16th to 20th Centuries*

EXHIBITING AT:

JP MORGAN CHASE BANK

THE VAULT, LEVEL 1

35 EAST 72ND STREET

NEW YORK, NY 10021

Bank hours, until 6 pm only

(closed on Sunday)

CELL +1 917 378 0543

310 Duke Ellington Boulevard

New York, NY 10025

T +1 212 378 5430

richardaberman@earthlink.net

Lombard School, late 15th century

*Grotesque*

Pen and brown ink, incised

Watermark: Flower (Milan, circa 1475–85)

15 $\frac{5}{8}$  × 10 $\frac{3}{4}$  in · 396 × 270 mm

# Christopher Bishop Fine Art

EXHIBITING AT:

LESLIE FEELY FINE ART

33 EAST 68TH STREET,

5TH FLOOR

NEW YORK, NY 10065

T +1 212 988 0083

146 North Street

Milford, CT 06460

Cell +1 203 494 8853

bishopfineart@optonline.net



Giuseppe Bernardino Bison

(1762–1844)

*The Holy Family*

Pen and brown ink with brown washes  
over traces of black chalk, highlighted in  
white on prepared pink paper

5 $\frac{3}{8}$  × 7 $\frac{1}{16}$  in · 136 × 186 mm (oval)



## Découvert Fine Art

EXHIBITING AT:

LOIS WAGNER FINE ARTS, INC.

15 EAST 71ST STREET,

SUITE 2A

NEW YORK, NY 10021

T +1 212 396 1407

73 Main Street

Rockport, Massachusetts 01966

T +1 978 546 9407

[www.Decouvertfineart.com](http://www.Decouvertfineart.com)

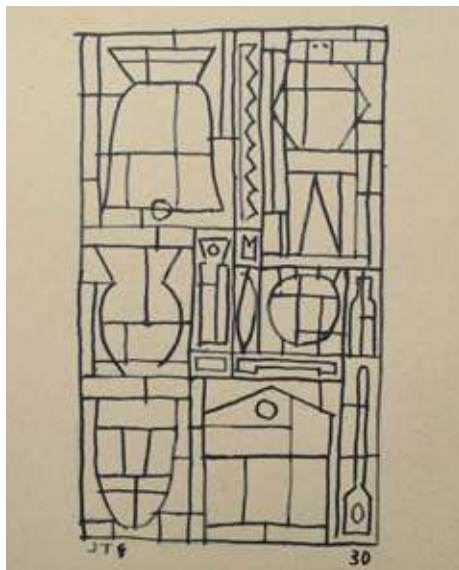
*The Feminine Observed,  
16th to 20th century,  
and New Acquisitions*

Willem (Guilliaum) De Heer (1637–81)

*Amorous Peasants in a Bower*

Pen and brown ink on parchment

7 $\frac{7}{8}$  × 6 $\frac{1}{4}$  in · 199 × 158 mm



## Marianne Elrick-Manley Fine Art, Inc.

EXHIBITING AT:  
MEREDITH WARD FINE ART  
44 EAST 74TH STREET  
SUITE G, NEW YORK, NY 10021

T +1 917 747 7605

118 Riverside Drive, Apt 10A  
New York, NY 10024  
T +1 212 873 7282

marianne@elrickmanley.com  
www.elrickmanley.com

Joaquín Torres-García (1874–1949)  
*Composición Constructivo*, 1930  
(Constructivist Composition)  
Ink on paper  
6 1/8 × 4 7/8 in · 155 × 125 mm

*A Transatlantic Modernist:  
Joaquín Torres-García and his contemporaries*

OPEN JANUARY 15–JANUARY 30

---

## Pia Gallo

12 EAST 86TH STREET  
SUITE 1140  
NEW YORK, NY 10028

T +1 212 369 4420  
info@piagallos.com  
www.piagallos.com

*American Masters:  
Pastels and Watercolors  
from Private Collections  
Frank Benson, Maurice  
Prendergast, Everett Shinn,  
Andrew Wyeth*

Everett Shinn (1876–1953)  
*The Yellow Dancer*, 1911  
Pastel on board  
14 3/8 × 19 1/2 in · 365 × 495 mm





# Margot Gordon Fine Arts

EXHIBITING AT:  
SHEPHERD W & K GALLERIES  
58 EAST 79TH STREET  
NEW YORK, NY 10075

T +1 212 861 4050  
646 441 1528  
mgordonfinearts@aol.com



## *Four Centuries of Figures and Faces*

EXHIBITION CONTINUES  
TILL 20 FEBRUARY

Donato Creti (1671-1749)  
*Sleeping Child*  
Pen and brown ink  
6 $\frac{7}{8}$  × 9 $\frac{3}{4}$  in · 174 × 247 mm

---

# Martyn Gregory

EXHIBITING AT:  
LEIGH MORSE FINE ARTS  
22 EAST 80TH STREET,  
5TH FLOOR  
NEW YORK, NY 10075  
T +1 212 288 4144

34 Bury Street, St James's,  
London, SW1Y 6AU

T +44 (0)20 7839 3731  
mgregory@dircon.co.uk  
www.martyngregory.com

## *British Watercolors and Drawings*

John Varley, O.W.S.  
(1778-1842)

*Twilight*

Watercolor

Signed and inscribed  
on original backing

*Twilight. J. Varley*

5 $\frac{7}{8}$  × 9 $\frac{3}{8}$  in · 150 × 249 mm



# Leonard Hutton Galleries

790 MADISON AVENUE  
SUITE 506  
NEW YORK, NY 10065

T +1 212 751 7373  
art@leonardhuttongalleries.com  
www.leonardhuttongalleries.com

## *Drawings and Watercolors: To Observe and Imagine*

JANUARY 23–FEBRUARY 26  
CLOSED SUNDAY 24 JANUARY

Sonia Delaunay (1885–1979)

Cover design for

*L'Album no. 1 (474)*, 1916

Gouache and wax with traces  
of pencil, laid down on board  
Numbered twice lower right  
(once faintly in pencil) *No 474*  
10 $\frac{3}{8}$  × 9 $\frac{1}{8}$  in · 264 × 251 mm



# Kraushaar Galleries

15 EAST 71ST STREET, #2B  
NEW YORK, NY 10021

T +1 212 288 2558  
staff@kraushaargalleries.com  
www.kraushaargalleries.com

Marsden Hartley (1877–1943)

*A Glass and Two Pears*

Watercolor on paper  
9 $\frac{5}{8}$  × 6 $\frac{3}{4}$  in · 244 × 171 mm

# Lowell Libson Ltd

EXHIBITING AT:  
STELLAN HOLM GALLERY  
1018 MADISON AVENUE  
NEW YORK, NY 10075  
T +1 240 478 6078

3 Clifford Street,  
London W1S 2LF  
T +44 (0)207 734 8686  
pictures@lowell-libson.com  
www.lowell-libson.com

*British Art:  
Recent Acquisitions*

James Jefferys (1751–1784)  
*An Incantation*, circa 1779  
Pen and black ink over pencil  
7 $\frac{3}{8}$  × 9 $\frac{1}{4}$  in · 188 × 235 mm



## James Mackinnon

EXHIBITING AT:  
ARADER GALLERIES  
1016 MADISON AVENUE  
3RD FLOOR  
NEW YORK, NY 10075  
T +1 212 628 7625  
Cell +44 7973 539 332  
james@mackinnon.com

John Ruskin (1819–1900)  
*A flowerhead*  
Pencil, watercolor, and bodycolor  
on buff paper  
7 $\frac{3}{16}$  × 5 $\frac{3}{4}$  in · 183 × 147 mm

# Mary-Anne Martin | Fine Art

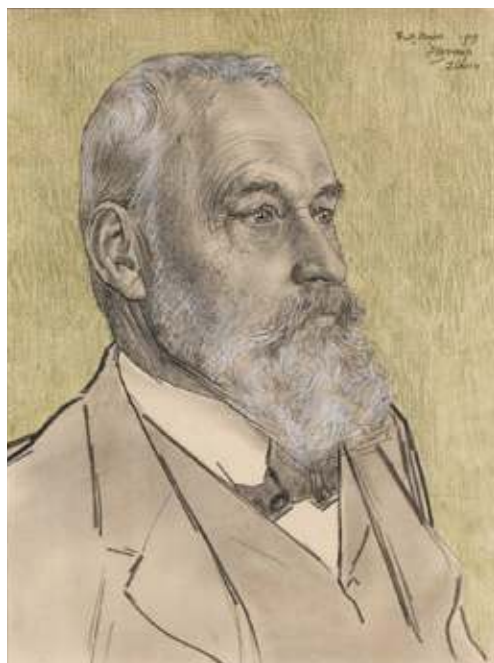
23 EAST 73RD STREET  
NEW YORK, NY 10021

T +1 212 288 2213  
mamartin@mamfa.com

[www.mamfa.com](http://www.mamfa.com)

*Drawings by  
the Muralists*

José Clemente Orozco  
(1883–1949)  
*Five Heads (Beggars)*  
Gouache on wove paper  
Signed lower left J.C. Orozco  
11 × 16 in · 289 × 406 mm



## Mireille Mosler Ltd

35 EAST 67TH STREET  
NEW YORK, NY 10065

T +1 212 249 4195  
info@mireillemoslerltd.com  
[www.mireillemoslerltd.com](http://www.mireillemoslerltd.com)

*Made in Holland.  
Dutch drawings from  
the 16th to 20th century*

Jan Toorop (1858–1928)  
*Portrait of Fritz Meyer-Fierz*, 1909  
Pencil, chalk and pastel on paper  
Signed, dated and inscribed  
*Fritz Meijer . 1909 / Jth Toorop / Zurich*  
18¼ × 13¾ in · 460 × 350 mm

# Mark Murray Fine Paintings

159 EAST 63RD STREET  
GROUND FLOOR  
NEW YORK, NY 10065

T +1 212 585 2380  
info@markmurray.com  
www.markmurray.com

Lucien Ott (1870–1927)  
*Homme à la pipe*  
Watercolor on paper  
Stamped with monogram  
22 × 16 in · 588 × 406 mm



# Jill Newhouse Gallery

4 EAST 81ST STREET  
NEW YORK, NY 10028

T +1 212 249 9216  
info@jillnewhouse.com  
www.jillnewhouse.com

Jean-Baptiste-Camille Corot  
(1796–1875)  
*Vieillard passant dans un vallon boisé*  
Charcoal on paper  
Signed lower right  
18 $\frac{3}{4}$  × 12 $\frac{3}{16}$  in · 480 × 310 mm

# Nissman, Abromson Ltd

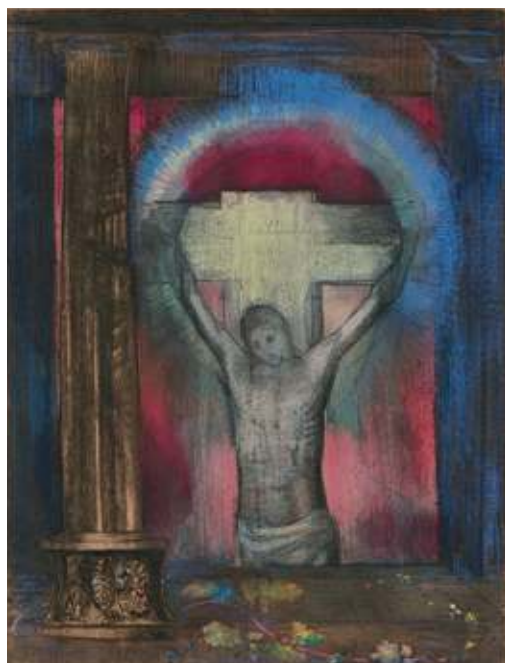
EXHIBITING AT:  
ROBERT SIMON FINE ART  
22 EAST 80TH STREET, 4TH FLOOR  
NEW YORK, NY 10028  
Cell +1 617 792 6044

286 Clinton Road  
Brookline, MA 02445

T +1 617 735 0467  
mail@nissman-abromson.com

[www.pada.net/members/memDetail.php/31](http://www.pada.net/members/memDetail.php/31)

Elihu Vedder (1836–1923)  
*Seated female nude*  
(*Study for a Wall Decoration*)  
Black and white chalk,  
blue pastel on blue-grey paper  
12¾ × 9¼ in · 324 × 234 mm



## Stephen Ongpin Fine Art

EXHIBITING AT:  
DICKINSON ROUNDELL  
19 EAST 66TH STREET,  
NEW YORK, NY 10065

T +1 212 772 8083  
Cell +1 917 587 1183

Riverwise House, 6 Mason's Yard  
Duke Street, St. James's, London SW1Y 6BU

T +44 (0)20 7930 8813  
info@stephenongpinfineart.com

[www.stephenongpin.com](http://www.stephenongpin.com)

Odilon Redon (1840–1916)  
*The Crucifixion*  
Pastel and chalk on paper  
laid down on board  
Signed *Odilon Redon* in black ink  
at the lower right.  
19¼ × 14½ in · 488 × 372 mm

# Pandora Old Masters Inc.

EXHIBITING AT:  
THE METROPOLITAN ROOM  
THE MARK HOTEL  
25 EAST 77TH STREET  
NEW YORK, NY 10075

PO Box 1761  
New York, NY 10021  
T +1 212 628 1974  
Cell +1 917 664 1124

[www.pandoraoldmasters.com](http://www.pandoraoldmasters.com)

Vincenzo Gemito (1852–1929)

*Medusa*

Black chalk, pencil, white and grey gouache  
on wood board

Signed and dated in pencil at the lower right

V. Gemito 1923

21 $\frac{5}{8}$  × 18 $\frac{5}{8}$  in · 550 × 473 mm



*European Masters from 16th century to 1900,  
Toulouse Lautrec Circle and Symbolism*

## Laura Pecheur

EXHIBITING AT:  
GALLERY STEPHEN SCHLESINGER  
24 EAST 73RD STREET, 2ND FLOOR  
NEW YORK, NY 10021

T +1 212 734 3600  
Cell +33 (0)6 07 37 35 48

16 rue de la Grange Batelière  
75009 Paris, France  
T +33 (0)147 70 04 38  
[l.pecheur@free.fr](mailto:l.pecheur@free.fr)

[www.laurapecheur.fr](http://www.laurapecheur.fr)

Louis Legrand (1863–1951)

*Elegant with a fan*

Pastel on paper

Monogrammed

25 $\frac{3}{16}$  × 19 $\frac{1}{4}$  in · 640 × 490 mm

# Guy Peppiatt Fine Art Ltd

EXHIBITING AT: ARADER GALLERIES  
1016 MADISON AVENUE, 1ST FLOOR  
NEW YORK, NY 10021

T +1 212 628 7625  
Cell +44 (0)7956 968 284

Riverwise House,  
6 Mason's Yard  
Duke Street, St James's  
London SW1Y 6BU

T +44 20 7930 3839  
guy@peppiattfineart.co.uk  
www.peppiattfineart.co.uk



Paul Sandby R.A. (1730–1809)  
*The Eagle Tower, Caernarvon Castle,  
North Wales*  
Pen and grey ink and watercolor  
over pencil on laid paper  
14½ × 20½ in · 363 × 516 mm

---

# Crispian Riley-Smith Fine Arts Ltd

EXHIBITING AT:  
SHEPHERD / W&K GALLERIES  
58 EAST 79TH STREET  
NEW YORK, NY 10075

T +1 212 861 4050  
Cell +44 7771 552509

Summerville, Kirkby Malham,  
Skipton  
North Yorkshire BD23 4BS

T +44 1729 830 734  
crispian@riley-smith.com

[www.riley-smith.com/crispian](http://www.riley-smith.com/crispian)



*Beasts and Birds and  
Landscape and Figures  
from Italy in the  
16 and 17 centuries*

CONTINUES TILL 20 FEBRUARY

Ary Scheffer (1795–1858)  
*Thirteen Head studies of Children  
in different angles, and a further  
study of Three Roses*  
Black chalk and watercolor on wove paper  
Signed A Scheffer fec  
13 × 19¾ in · 329 × 501 mm



# Mattia & Maria Novella Romano

EXHIBITING AT:  
ARADER GALLERIES  
1016 MADISON AVENUE, 4TH FLOOR  
NEW YORK, NY 10075

T +1 212 628 7625  
Cell +39 338 77 61 867

Simone Romano e Figli – Firenze  
36 Borgo Ognissanti  
50123 Florence, Italy  
T +39 055 239 60 06  
info@antiksimeromanoefigli.com  
www.antiksimeromanoefigli.com

Carlo Alberto Baratta (1754–1815)  
*The goddess Cybele*

Ink, watercolored ink, tempera and  
traces of pencil on laid paper  
10 × 7 in · 254 × 180 mm



# Allan Stone Projects

EXHIBITING AT:  
JONATHAN BOOS  
801 MADISON AVENUE, 5TH FLOOR  
NEW YORK, NY 10065

535 West 22nd Street, 3rd Floor  
New York, NY 10011

T +1 212 987 4997  
Cell +1 917 421 9895  
info@allanstoneprojects.com  
www.allanstoneprojects.com



Wayne Thiebaud (b.1920)  
*Untitled (Bowl of Cherries)*  
Pastel on paper  
13½ × 17¼ in · 342 × 438 mm

# David Tunick, Inc.

13 EAST 69TH STREET  
NEW YORK, NY 10021

T +1 212 570 0090  
info@tunickart.com  
www.tunickart.com



Giacomo Balla (1871–1958)  
*Orbite celesti – studio*, c. 1913–14  
Pencil  
Signed in pencil top right  
*Futur Balla*  
19 × 24¾ in · 482 × 628 mm

---

## Monroe Warshaw

EXHIBITING AT:  
5 EAST 82ND STREET  
NEW YORK, NY 10028  
Cell +1 917 575 8142

5 Riverside Drive,  
New York, NY 10023  
monroe.warshaw@gmail.com  
www.oldmasterdoodles.com

## Drawn TO MYTHOLOGY

George Barbier (1882–1932)  
*Design for a Fan*  
Inspired by *L'Après midi  
d'un faune* by Vaslav Nijinsky  
Gouache  
Signed and dated 1915  
8½ × 14 in · 217 × 355 mm





## Van Doren Waxter

23 EAST 73RD STREET  
NEW YORK, NY 10021

T +1 212 445 0444  
info@vandorenwaxter.com  
www.vandorenwaxter.com

*Richard Diebenkorn:  
Early Color Abstractions  
1949–1955*

JANUARY 13–MARCH 5

Richard Diebenkorn (1922–1993)  
*Untitled*, c. 1950–53  
Gouache and graphite on paper  
14 × 11 in · 356 × 279 mm

---

## Mia N. Weiner

EXHIBITING AT:  
L'ANTIQUAIRE AND  
THE CONNOISSEUR  
36 EAST 73RD STREET  
NEW YORK, NY 10021  
Cell +1 860 480 0100

Mia N. Weiner  
Mountain Road, Norfolk, CT 06058  
T +1 860 542 1893  
mweiner@oldmasterdrawings.com  
www.oldmasterdrawings.com

Fra Semplice da Verona (1589–1654)  
*Study for head of figure on far left of  
'Parable of the Unworthy Guest', dated 1622*  
Red and black chalk on blue paper  
10 $\frac{3}{8}$  × 8 $\frac{1}{8}$  in · 265 × 215 mm



# W & K Wienerroither & Kohlbacher

EXHIBITING AT:  
SHEPHERD / W&K GALLERIES  
58 EAST 79TH STREET  
NEW YORK, NY 10075

T +1 212 861 4050

W&K – Wienerroither & Kohlbacher  
Strauchgasse 2, 1010 Vienna

T +43 1 533 9977  
office@austrianfineart.at

[www.austrianfineart.com](http://www.austrianfineart.com)

Ernst Ludwig Kirchner (1880–1938)

*Stretching Nude*, circa 1913–14  
Watercolor over drawing in pencil  
on vellum

Signed lower right *E L Kirchner*  
23 $\frac{3}{16}$  × 18 $\frac{1}{16}$  in · 589 × 459 mm



## Pierre-Jean Mariette and the Art of Collecting Drawings

JANUARY 22 – MAY 1, 2016

This exhibition is a program  
of the Drawing Institute at the  
Morgan Library & Museum.  
Additional support is provided  
by Lowell Libson Ltd.

The  
Morgan  
Library &  
Museum

Madison Ave. at 36th St.  
[themorgan.org](http://themorgan.org)  
#MorganLibrary

Girolamo Francesco Maria  
Mazzola, called Parmigianino  
(1503–1540), *Man Standing  
Beside a Plinth, and a Study  
of Saint Luke*, ca. 1530–40.  
Pen and brown ink, brown wash.  
Purchased by Pierpont Morgan  
in 1909. The Morgan Library  
& Museum.



# LONDON ART 2016 WEEK 1-8 JULY

In the galleries of Mayfair and St. James's, the historic heartland of the art market, the capital's foremost art experts unite to unveil new discoveries and showcase paintings, drawings, sculpture, and works of art, from antiquity to the 20th century.



@london\_art\_week



@londonartweek

[www.LondonArtWeek.co.uk](http://www.LondonArtWeek.co.uk)

# Christie's

MARKETING PARTNERS

20 ROCKEFELLER PLAZA  
NEW YORK, NY 10020

Contact: Jennifer Wright  
Telephone +1 212 636 2384  
Email [jwright@christies.com](mailto:jwright@christies.com)

[www.christies.com](http://www.christies.com)

## Old Master & British Drawings

SALE DATE

27 January 2016

Adriaen van de Velde (1636–1672)  
*Study of a seated boy  
leaning on a flagon*

Black and red chalk, watermark  
crowned shield with bunch of grapes  
and monogram CP

With inscription *Carel Du Jardin*

7 $\frac{3}{4}$  × 10 in · 195 × 255 mm

Estimate \$90,000–120,000



# Sotheby's

1334 YORK AVENUE  
NEW YORK, NY 10021

## Old Master Drawings New York

SALE DATE

Thursday 28 January 2016

VIEWING TIMES

Friday 22 January | Wednesday 27  
10 am–5 pm

Sunday 24 January 1–5 pm

ENQUIRIES

New York +1 212 606 7230

London +44 (0)20 7293 6450

Register now at [sothebys.com](http://sothebys.com)



## Old Masters The Collection of A. Alfred Taubman

SALE DATE

27 January 2016

6 pm

Giovanni Domenico Tiepolo  
(1727–1804)

*The Country School*

Pen and brown ink and two shades of  
brown wash, over black chalk

Signed in pen and ink on the table edge

*Dom. O Tiepolo f.*

13 $\frac{3}{4}$  × 18 $\frac{3}{4}$  in · 350 × 465 mm

Estimate \$600,000–800,000 USD

SUPPORTED BY

APOLLO

THE BURLINGTON  
MAGAZINE

CHRISTIE'S

Sotheby's

LONDON  
ART 2016  
WEEK

Metropolitan  
Museum of Art

# Upper East Side

